



Cav3.3 Polyclonal Antibody

Catalog No	YP-Ab-16325
Isotype	IgG
Reactivity	Human;Rat;Mouse
Applications	IHC;IF
Gene Name	CACNA1I
Protein Name	Voltage-dependent T-type calcium channel subunit alpha-1I (Voltage-gated calcium channel subunit alpha Cav3.3) (Ca(v)3.3)
Immunogen	Synthetic Peptide of Cav3.3 AA range: 210-290
Specificity	Cav3.3 protein(A209) detects endogenous levels of Cav3.3
Formulation	Liquid in PBS containing 50% glycerol, 0.5% BSA and 0.02% sodium azide.
Source	Polyclonal, Rabbit,IgG
Purification	The antibody was affinity-purified from rabbit antiserum by affinity-chromatography using specific immunogen.
Dilution	IHC 1:100-200. IF 1:50-200
Concentration	1 mg/ml
Purity	≥90%
Storage Stability	-20°C/1 year
Synonyms	Voltage-dependent T-type calcium channel subunit alpha-1I (Voltage-gated calcium channel subunit alpha Cav3.3;Ca(v)3.3)
Observed Band	240kD
Cell Pathway	Membrane; Multi-pass membrane protein.
Tissue Specificity	Brain specific.
Function	domain:Each of the four internal repeats contains five hydrophobic transmembrane segments (S1, S2, S3, S5, S6) and one positively charged transmembrane segment (S4). S4 segments probably represent the voltage-sensor and are characterized by a series of positively charged amino acids at every third position.,function:Voltage-sensitive calcium channels (VSCC) mediate the entry of calcium ions into excitable cells and are also involved in a variety of calcium-dependent processes, including muscle contraction, hormone or neurotransmitter release, gene expression, cell motility, cell division and cell death. Isoform alpha-1I gives rise to T-type calcium currents. T-type calcium channels belong to the "low-voltage activated (LVA)" group and are strongly blocked by nickel and mibefradil. A particularity of this type of channels is an opening at quite negative potentials, and a voltage-dependent
Background	calcium voltage-gated channel subunit alpha1 I(CACNA1I) Homo sapiens This gene encodes the pore-forming alpha subunit of a voltage gated calcium



channel. The encoded protein is a member of a subfamily of calcium channels referred to as is a low voltage-activated, T-type, calcium channel. The channel encoded by this protein is characterized by a slower activation and inactivation compared to other T-type calcium channels. This protein may be involved in calcium signaling in neurons. Alternate splicing results in multiple transcript variants. [provided by RefSeq, Oct 2011],

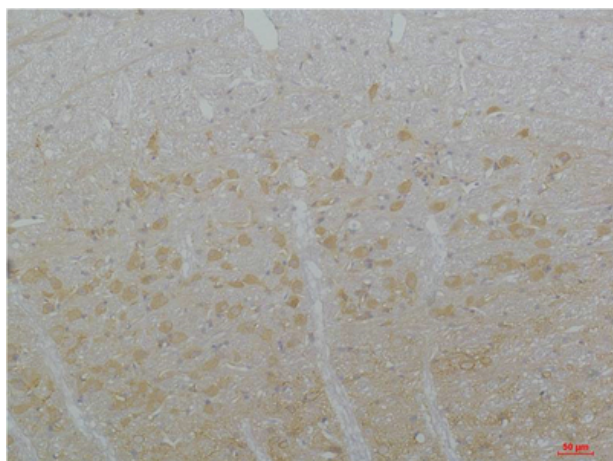
matters needing attention

Avoid repeated freezing and thawing!

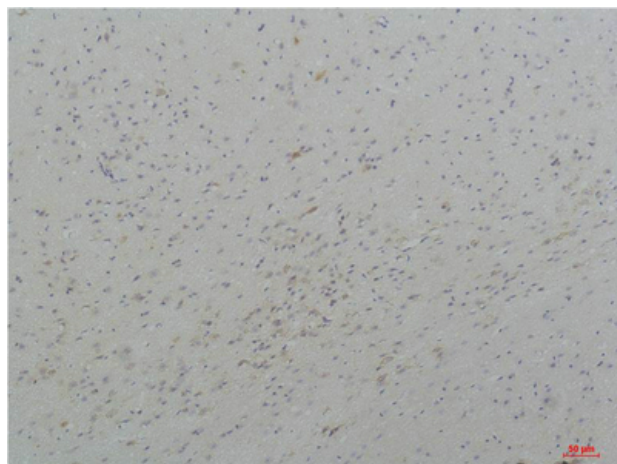
Usage suggestions

This product can be used in immunological reaction related experiments. For more information, please consult technical personnel.

Products Images



Immunohistochemical analysis of paraffin-embedded Rat Brain Tissue using Cav3.3Rabbit pAb diluted at 1:200.



Immunohistochemical analysis of paraffin-embedded Mouse Brain Tissue using Cav3.3Rabbit pAb diluted at 1:200.